

DR. SQUEEZE™

Wheatgrass Juicers

GreenQueen™
Household
Electric Model



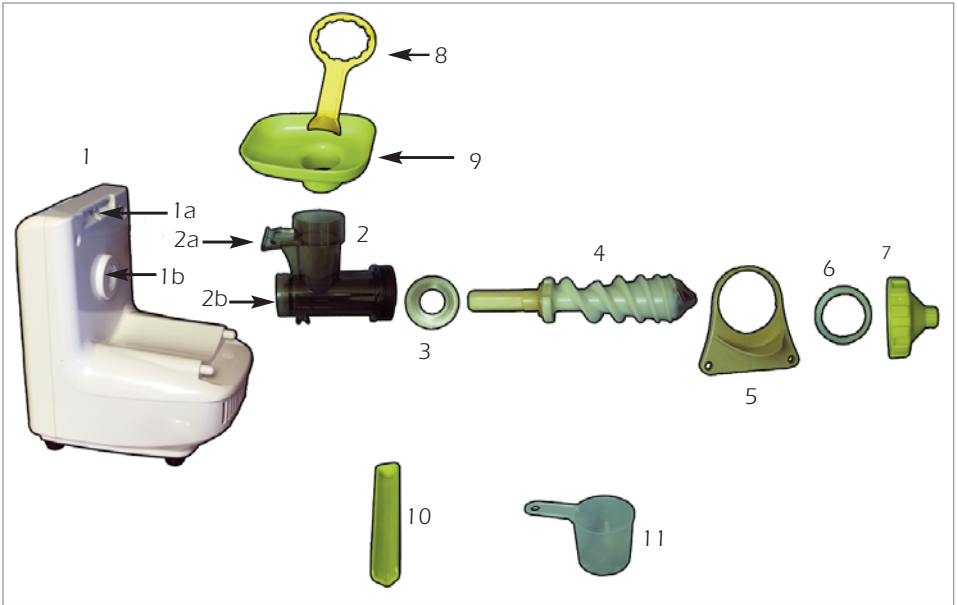
Owner's Manual

Please read all instructions carefully before use.

1-866-628-7451

Congratulations!

You have just purchased one of the most efficient wheatgrass juicers on the market. The Dr. Squeeze "Green Queen" can also extract juice from other leafy greens such as spinach. This machine is designed for household use only. It is one of the simplest to operate and clean. With a little practice, you will be able to put it together, juice with it, and clean and reassemble it all in a few minutes.



Juicer Parts (Numbered in order of assembly) **NOTE:** Check to see that all parts are included in box.

- 1) Motor Base
- 1a) Motor receptacle (slot) for feed pipe
- 1b) Motor receptacle for grinding auger
- 2) Feed Pipe with bushing insert
- 2a) Top of feed pipe
- 2b) Bushing (not pictured)*
- 3) Metal washer
- 4) Grinding Auger
- 5) Brace
- 6) Gasket
- 7) Locking Ring / Pulp Outlet
- 8) Wrench / Tamper
- 9) Hopper Tray
- 10) Juice Duct
- 11) Measuring Cup



* The bushing is a small plastic part designed to stay in place inside the feed pipe, but can be removed if it needs to be cleaned or replaced.

Assembling Your Juicer

- 1) Check to see that the white bushing (#2b) is in place inside feed pipe (#2). If bushing is loose, place it onto shaft of grinding auger (#4) and maneuver it into feed pipe.
- 2) To mount feed pipe (#2) onto motor base (#1), place top of feed pipe (#2a) at a 45 degree angle into slot on top of motor (motor receptacle -1a) and lower until it locks in place. **(see photo A, below)**
- 3) Place metal washer (#3) on end of grinding auger (#4). Place a drop of food oil on both sides of the washer to extend the life of your machine.
- 4) Insert the grinding auger (#4) inside the feed pipe (#2) until the shaft fits into the motor receptacle (#1b)
- 5) Slide circular opening of brace (#5) over feed pipe (#2) and snap in place.
- 6) Spread a single drop of food oil around the threads on inside of locking ring (#7) before each use.
- 7) Place gasket (#6) inside locking ring (#7).
- 8) Turn locking ring (#7) clockwise by hand onto end of feed pipe (#2).
- 9) To tighten the locking ring (#7), turn the machine around with the On/Off switch facing you and the pulp outlet pointing to your left. Put the wrench (#8) in place on the locking ring at a 90-degree angle. Hold the top of the motor with your right hand. With your left hand, push downward on the wrench handle in a clockwise direction. Use slow steady pressure until it is tightened firmly. Avoid over-tightening, which could cause the threads to strip or the wrench to break. Also avoid leaving it too loose, as it could unscrew while the machine is juicing and cause damage.
Never tighten or loosen the locking ring while the motor is running.
Note: the direction of "lock" and "open" is shown on the brace (#5): clockwise to tighten, counterclockwise to loosen **(see photo B, below)**
- 10) Now turn the machine around so that the pulp outlet points to your right. Slide the juice duct (#10) onto the mounting guides located under on the under side of the feed pipe (#2).
- 11) Place hopper tray (#9) on top of feed pipe (#2).
- 12) Place measuring cup (#11) under juice duct (#10) to catch juice.
- 13) Place a bowl under pulp outlet (#7) to catch pulp.



Operating Tips

Note: Before actually using this machine, be sure to read all the “warnings” on page 5, as some are specific to this machine.

- This juicer is intended for leafy greens only. Do not juice hard vegetables such as carrots, beets, or turnips, as they may damage the machine.
- You may lubricate the threads on the inside of the locking ring with just **a drop** of vegetable oil before each use, but be sure to tighten securely. This will make it easier to loosen the locking ring after you are done juicing. Putting too much oil or not tightening the locking ring enough might allow the locking ring to unscrew during juicing. This could cause damage to parts.
- Before you turn on the machine, always make sure the locking ring (#7) is tight and the machine is properly assembled.
- Take a handful of grass, about the diameter of a nickel when pinched tightly.
- Gently put grass into feed pipe (#2) allowing grass to go down and contact grinding auger (#4).
- Take care not to put your fingers anywhere near auger. Always use hopper tray (#9) and tamper (#8).
- The auger is designed to pull the grass down into the juicer. However, to help it along you may use the tamper (#8) to push it through. The tamper must face forward to fit in properly. Do not push grass down with your fingers!
- Feed the grass into the juicer in a continuous motion. Quickly prepare the next handful of grass to feed in right behind the first. Consider that each bunch of grass is pressed gently through by the following bunch.
- For best results, try not to feed in too much or too little grass at a time. Too much will clog the machine. Waiting too long between feeding in grass or putting in too little will result in inefficient juicing.
- Do not run the pulp through the juicer a second time. The pulp comes out so dry that to do this would stress the entire machine.
- Before disassembling your juicer, let the machine run for an additional 1-2 minutes until all or most of the pulp has been pushed through. Excess pulp can make it difficult to unscrew the locking ring.
- Don't let machine sit after use. Disassemble and clean right away.
- We recommend purchasing a small fine-mesh stainless steel strainer to remove pulp from the juice.

Disassembling Your Juicer

- 1) Before disassembling, run juicer 1-2 minutes to remove all pulp.
- 2) Shut motor. Never try to disassemble your machine while the motor is running.
- 3) Disassemble immediately after juicing. Parts clean more easily when the pulp is soft and fresh.
- 4) Remove hopper tray.
- 5) Remove juice duct by pushing it towards juicer and down to unlock.
- 6) With pulp outlet facing to your right, put wrench in place on locking ring (at 90 degree angle) and push downward on handle of wrench to unscrew counterclockwise. Once loose, unscrew by hand.
Note: direction of "open" and "lock" is shown on brace.
- 7) Remove brace.
- 8) Remove grinding auger and metal washer from inside feed pipe.
- 9) Lift open end of feed pipe up off motor at 45 degree angle to remove from motor base.
- 10) If bushing comes out, put it back into small end of feed pipe to reinstall it.

Cleaning Your Juicer

- 1) Wash all parts by hand with warm soapy water and a soft sponge. A baby bottle brush works well to clean inside the feed pipe.
- 2) Do not put parts into dishwasher or into boiling water. Parts may be damaged by heat.
- 3) Air dry parts in dish rack.
- 4) Optional: When dry, apply a drop of vegetable oil on both sides of the metal washer. This can greatly extend the life of the juicer.
- 5) Lightly sponge clean the motor base; do not pour water into motor or submerge it in water.

Safety Directions

Warning!

Read and fully understand all instructions and warnings prior to using this appliance. Your safety is most important. Failure to comply with procedures and safeguards may result in serious injury or damage to the machine. Remember that your personal safety is your responsibility!

- Never try to assemble or disassemble the machine while motor is on. Always turn switch to “off” position and unplug juicer beforehand to prevent damaging the plastic threads on the feed pipe and locking ring.
- DANGER! Never submerge or rinse motor base in water. Electrocutation may result.
- To avoid injury, always use hopper tray.
- Never put hands into feed pipe while motor is on.
- Only use the provided tamper to push grass into juicer.
- Do not attempt to use other kitchen objects, such as a wooden spoon, to push the grass into the machine! Other objects will get caught in the machine and damage it.
- Do not try to juice hard vegetables such as carrots, beets, or turnips, as they may damage the machine. This machine is only intended for leafy greens.
- Do not stuff large amounts of grass into the machine. The motor and gears may overheat and be damaged, voiding the warranty.
- If the motor stops during juicing, shut the switch immediately to prevent motor from overheating and being permanently damaged.
- If there is any smoke or burning smell coming from the motor, shut the switch and unplug the unit immediately. Contact customer service.
- Do not put any parts in the dishwasher or in boiling water as plastic parts may be damaged by heat.
- Keep the machine away from children! Close supervision is necessary when any appliance is used by or near children.
- Do not use any appliance with a damaged cord or plug.
- Do not let the cord hang over the edge of a table or counter or touch hot surfaces.
- Do not move machine while it is plugged in and running.
- Do not allow water to enter the motor. If water gets into the motor for any reason, do not use the machine and contact our service center.
- Do not run the machine on a wet surface.
- Do not use this appliance outside.
- If you have any questions concerning safety, please call our **toll-free service center at 1-866-628-7451.**

Trouble Shooting

1) The motor doesn't go on.

Check to see that plug is securely in wall outlet. Make sure the outlet has power to it. Make sure you are turning the safety switch to the "on" position.

2) Juice leaks from behind the locking ring and brace.

- a) Check to see that gasket (#6) is in place inside locking ring (#7).
- b) The locking ring (#7) might be too loose. Sponge up the leak before disassembling the juicer, pull out pulp from inside the juicer and then reassemble it making sure that it is tight. Use wrench to tighten.
- c) You might be feeding too much grass into the juicer too quickly. Use smaller amounts and feed more slowly.

3) I can't unscrew the locking ring.

- a) Make sure you are turning the locking ring in a counterclockwise direction to loosen it. Press down on the handle of the wrench.
- b) Turn machine back on and let run for 1 – 2 minutes until all or most of the pulp has been pushed through. Then shut machine and try to unscrew locking ring using wrench.
- c) Try repositioning wrench at 90 degrees for more leverage and try not to over tighten locking ring.
- d) Next time, lubricate the threads on inside of the locking ring with a drop of vegetable oil.

4) There is pulp in my juice.

Pour the juice through a small fine-mesh stainless steel strainer to remove the pulp. You can purchase one at a local store.

Special Features of the Green Queen

- The materials that touch food are all made of food quality non-toxic materials (nylon polymer and stainless steel).
- The grinding auger has a low rotation speed (less than 60 rpm) to retain nutrients and taste. Other juicers with a high rotation speed tend to oxidize the juice and cause it to lose nutrients.
- The "Green Queen" out produces the competition. It gives more ounces of juice per pound of grass. The proof is in the pulp; it is so dry you can not get another drop out of it!

Technical Data:

- Power Supply: 110 V AC 60 Hz
- Power input idling: 38 W
- Power input under load: 278 W
- Rated speed of motor: 5600 rpm
- Rated speed of auger: 56 rpm
- Insulation class: 2 (no grounding required)
- Radio interference level: N/A
- Weight (with box): 9.04 lbs./4.3 kg.

About Wheatgrass

Wheatgrass is a green super-food that is probably the most valuable source of natural nutrients on earth. It contains vitamins A, B, C, calcium, iron, magnesium, phosphorus, potassium, sodium, sulfur, cobalt, zinc, living enzymes, and protein in the form of amino acids. The solid portion of wheatgrass juice is 70% chlorophyll, which is often referred to as the blood of the plant and closely resembles the molecules of human red blood cells. Chlorophyll is known to produce an unfavorable environment for bacterial growth in the body and is therefore effective in increasing the body's resistance to illness.

Wheatgrass juice is part of the "raw foods" diet as first promoted by Dr. Ann Wigmore. Ideally, it should be incorporated into a diet consisting of sprouted seeds and beans, raw fruits and vegetables, as well as fermented foods such as raw sauerkraut and Rejuvelac (a sprouted wheat drink).

Wheatgrass juice can:

- Cleanse the bloodstream of toxins
- Build healthy blood as it increases hemoglobin levels
- Improve circulation
- Help reduce high blood pressure
- Alleviate anemia by providing iron
- Promote healthy gums and skin
- Aid digestion
- Curb appetite
- Reduce cravings for addictive substances
- Increase energy
- Wheatgrass pulp soaked in wheatgrass juice can be applied to the skin as a poultice

How to Drink Wheatgrass Juice

Try 1 ounce of wheatgrass juice per day for the first week. It is best to drink the juice in the morning on an empty stomach and wait at least 20 minutes before eating. Over time the amount can gradually be increased to 2 to 3 ounces per day as a healthy supplement. If you are on a cleansing diet, you can drink as much as 4 to 6 ounces per day. For best results, drink wheatgrass juice twice a day, for example, 2 ounces in the morning and 2 ounces later in the afternoon. This is better than trying to drink a large amount all at once.



**PERFECT
FOODS**

Wheatgrass juice can be mixed with other vegetable juices such as carrot, celery, or parsley, but it does not combine well with fruit juices. In general, it is digested more quickly if you just drink it straight.

For more information, visit Perfect Foods online at www.800wheatgrass.com

Please Note: The information regarding wheatgrass is not intended to be medical advice. Wheatgrass does not "cure" anything; it simply provides the body with proper nourishment, which supports healing. If you are ill, please see your doctor.

Perfect Foods, Inc. is the sole importer of Dr. Squeeze Green Queen

Warranty

Perfect Foods, Inc. warrants to the ORIGINAL RETAIL PURCHASER of this product that if operated in accordance with the printed instruction accompanying it, then for a period of 1 year from the date of purchase, the motor shall be free from defects in material and workmanship.

The Warranty Card, along with a copy of the original receipt, must be received by Perfect Foods, Inc. within 30 days from purchase date for the warranty to apply. Failure to send the completely filled out Warranty Card, along with a copy of the original receipt, will void the warranty.

The product must be delivered to or shipped freight prepaid to Perfect Foods for warranty services, in either its original packaging or similar packaging affording an equal degree of protection. Damage due to shipping is not the responsibility of the company.

1-year warranty with proof of purchase. For household use only.

For questions or service, call: 1-866-628-7451



Limited Product Warranty

Send this along with a copy of your original purchase receipt to:
Perfect Foods, Inc.
862 Pulaski Highway, Goshen, NY 10924

Customer Name: _____

Address: _____

City/State/Zip: _____

Telephone Number: _____

E-Mail Address: _____

Model: **Green Queen Wheatgrass Juicer**

Original Date of Purchase: _____ Serial #: _____